



**Office of the
Information Commissioner**

Freedom of information for Western Australia

Annual Report 2023/24

We acknowledge the traditional custodians throughout Western Australia and their continuing connection to the land, waters and community. We pay our respects to all members of the Aboriginal communities and their cultures; and to Elders past, present and emerging.

Contact Details

Office address

Albert Facey House
469 Wellington Street
PERTH WA 6000 ([map](#))

Telephone

(08) 6551 7888

Freecall for WA country regions

1800 621 244

Email

info@oic.wa.gov.au

Website

www.oic.wa.gov.au

This annual report and previous annual reports are published on the OIC website and are available in other formats on request.



18 September 2024

**SPEAKER OF THE LEGISLATIVE ASSEMBLY
PRESIDENT OF THE LEGISLATIVE COUNCIL**

ANNUAL REPORT TO 30 JUNE 2024

In accordance with section 63 of the *Financial Management Act 2006* I hereby submit my report for the reporting period ended 30 June 2024.

The annual report has been prepared in accordance with the provisions of the *Financial Management Act 2006* and the reporting requirements of the *Freedom of Information Act 1992* (WA).

A handwritten signature in blue ink that reads "Catherine Fletcher".

Catherine Fletcher
INFORMATION COMMISSIONER

Albert Facey House, 469 Wellington Street Perth WA 6000
Telephone: (08) 6551 7888
Freecall (WA country): 1800 621 244
Email: info@oic.wa.gov.au
Web: <https://www.oic.wa.gov.au>

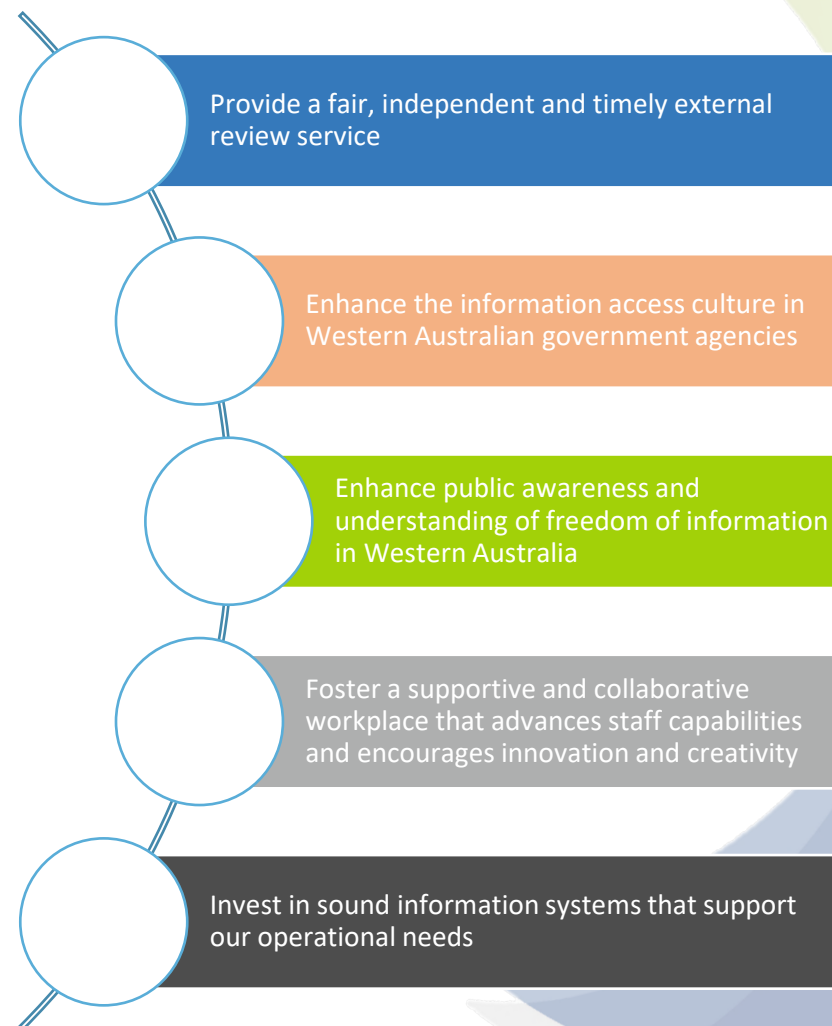
About this report

Welcome to the annual report of the Office of the Information Commissioner (**the OIC**) for 2023/24.

The aim of this report is to provide a comprehensive overview of our performance during the reporting year, provide insight into the goals and operations of the OIC, and the operation of the *Freedom of Information Act 1992 (WA)* (**the FOI Act**) in Western Australia. The services we deliver are designed to provide an outcome that gives the people of Western Australia (**WA**) access to documents held by WA State and local government agencies, as required by the law, and to provide a mechanism to ensure their personal information is accurate. We also educate agencies on their responsibilities under freedom of information (**FOI**) legislation and provide assistance to the community to help them understand their rights under FOI legislation.

The objects of the FOI Act align with the intention of agency annual reports – greater accountability and transparency. We trust that this report on our activities and performance during the last reporting year provides valuable insight into our operations and outcomes and the operation of the FOI Act in WA.

Strategic goals



Agency Statistics

Section 111 of the FOI Act requires the Commissioner to provide a report to the Speaker of the Legislative Assembly and the President of the Legislative Council on the operation of the legislation during the reporting period. In order to collate this, the following statistical information is requested from each State and local government agency for the financial year:

- the number of access applications received and dealt with;
- the number of decisions to: give access to documents; give access to edited copies of documents; defer giving access to documents; give access to a document in the manner referred to in section 28; refuse access to documents; and the number of times each of the exemption clauses was used;
- the number and outcome of applications for internal review;
- the number of applications for amendment of personal information received and dealt with;
- the number of decisions to amend personal information in accordance with an application and not to amend personal information in accordance with an application;
- the number and outcome of applications for internal review in respect of applications for amendment of personal information; and
- the amount of fees and charges collected and details of fees and charges that were reduced or waived.

Included in the survey request to agencies, the OIC asks for additional information that is used to participate in national metrics reporting, gather key performance indicator data and monitor other agency compliance responsibilities under the FOI Act.

An overview of the collated data is outlined in the [FOI in the Sector](#) chapter of this report. The following tables contain the itemised data provided by agencies.

Index to tables

- 12 [Valid access applications received by agencies](#)
- 13 [Outcome of access applications finalised by agency decision](#)
- 14 [Number of times exemption clauses were used by agencies](#)
- 15 [Outcome of applications for internal review](#)
- 16 [Applications for amendment of personal information](#)
- 17 [Applications for internal review of decisions regarding amendment of personal information](#)
- 18 [Fees paid and charges collected for access applications](#)
- 19 [Charges reduced by agencies](#)

Table 12: Valid access applications received by agencies

This table reflects the total number of valid access applications received by agencies in the reporting period.

The requirements of a valid access application are set out under section 12(1) of the FOI Act, which provides that an access application has to:

- be in writing;
- give enough information to enable the requested documents to be identified;
- give an Australian address to which notices can be sent; and
- be lodged at an office of the agency with any application fee payable.

AGENCY	No.
Boards, Committees, Commissions, Authorities, Corporations	
Aqwest	2
Burswood Park Board	0
Busselton Water	0
Chemistry Centre Western Australia	2
Commissioner for Children and Young People	0
Construction Industry Long Service Leave Payments Board	0

AGENCY	No.
Construction Training Fund	0
DevelopmentWA	6
Economic Regulation Authority	0
Electoral Commission, Western Australian	1
Equal Opportunity Commission	1
Forest Products Commission	4
Fremantle Port Authority	3
Gascoyne Development Commission	0
Gold Corporation	3
Goldfields-Esperance Development Commission	0
Government Employees Superannuation Board	3
Great Southern Development Commission	0
Greyhound Racing Association, Western Australian	3
Horizon Power	1
Insurance Commission of Western Australia	151
Kimberley Development Commission	0
Kimberley Ports Authority	0
Landgate	13
Legal Aid Western Australia	44
Legal Practice Board	4
Lotteries Commission	1
Mental Health Advocacy Service	3

AGENCY	No.
Mental Health Commission	1
Metropolitan Cemeteries Board	12
Mid West Development Commission	1
Mid West Ports Authority	0
Minerals Research Institute of Western Australia	0
National Trust of Australia (WA)	0
Peel Development Commission	0
Pilbara Development Commission	0
Pilbara Ports Authority	2
Public Advocate, Office of the	6
Public Sector Commission	5
Public Transport Authority	28
Public Trust Office	1
Racing and Wagering Western Australia	8
Registrar, WA Industrial Relations Commission, Department of the	1
Salaries and Allowances Tribunal	1
School Curriculum and Standards Authority	8
Small Business Development Corporation	6
South West Development Commission	0
Southern Ports Authority	1
Sports Centre Trust (VenuesWest)	3

AGENCY	No.
Synergy	9
Water Corporation	44
Western Power	27
Wheatbelt Development Commission	0
WorkCover Western Australia (Workcover WA)	203
<i>Sub-total: Boards, Committees, Commissions, Authorities, Corporations</i>	<i>612</i>
Departments (except Police and Health related agencies)	
Biodiversity, Conservation and Attractions, Department of	38
Central Regional TAFE	1
Communities, Department of	610
Education, Department of	220
Energy Disputes Arbitrator, Western Australian	0
Energy, Mines, Industry Regulation and Safety, Department of	746
Finance, Department of	17
Fire and Emergency Services, Department of	223
Health, Department of	45
Jobs, Tourism, Science and Innovation, Department of	21
Justice, Department of	1,391
Local Government, Sport and Cultural Industries, Department of	63

AGENCY	No.
Main Roads Western Australia	44
Mental Health Tribunal	0
North Metropolitan TAFE	7
North Regional TAFE	1
Planning, Lands and Heritage, Department of	104
Premier and Cabinet, Department of the	48
Primary Industries and Regional Development, Department of	30
South Metropolitan TAFE	4
South Regional TAFE	7
Training and Workforce Development, Department of	33
Transport, Department of	374
Treasury, Department of	8
Water and Environmental Regulation, Department of	228
<i>Sub-total: Departments</i>	<i>4,263</i>
Health Related Agencies	
<i>East Metropolitan Health Services (EMHS)</i>	
C&AHS - Perth Children's Hospital	111
Chief Psychiatrist, Office of the	4
EMHS - Armadale Kalamunda Group	700
EMHS - Corporate Office	14
Royal Perth Bentley Group	3,575

AGENCY	No.
<i>Sub-total: EMHS</i>	<i>4,404</i>
<i>North Metropolitan Health Services (NMHS)</i>	
Health and Disability Services Complaints Office	3
Health Support Services	3
Healthway	0
NMHS - Corporate Office	10
NMHS - King Edward Memorial Hospital	268
NMHS - Mental Health	423
NMHS - Osborne Park Hospital	54
NMHS - PathWest Laboratory Medicine WA	35
NMHS - Sir Charles Gairdner Hospital	1,221
<i>Sub-total: NMHS</i>	<i>2,017</i>
<i>South Metropolitan Health Services (SMHS)</i>	
SMHS - Fiona Stanley Fremantle Hospital Group	2,580
SMHS - Rockingham Peel Group	630
<i>Sub-total: SMHS</i>	<i>3,210</i>
<i>Western Australia Country Health Services (WACHS)</i>	
WACHS - Central Office	13
WACHS - Goldfields	406
WACHS - Great Southern	307
WACHS - Kimberley	714

AGENCY	No.
WACHS - Midwest	422
WACHS - Pilbara	440
WACHS - South West	669
WACHS - Wheatbelt	302
<i>Sub-total: WACHS</i>	<i>3,273</i>
<i>Sub-total: Health Related Agencies</i>	<i>12,904</i>
Local Governments	
Albany, City of	13
Armadale, City of	22
Ashburton, Shire of	10
Augusta-Margaret River, Shire of	15
Bassendean, Town of	12
Bayswater, City of	17
Belmont, City of	14
Beverley, Shire of	0
Boddington, Shire of	0
Boyup Brook, Shire of	0
Bridgetown-Greenbushes, Shire of	3
Brookton, Shire of	0
Broome, Shire of	8
Broomehill-Tambellup, Shire of	0
Bruce Rock, Shire of	0

AGENCY	No.
Bunbury, City of	11
Bunbury-Harvey Regional Council	0
Busselton, City of	24
Cambridge, Town of	26
Canning, City of	26
Capel, Shire of	2
Carnamah, Shire of	1
Carnarvon, Shire of	1
Catalina Regional Council	0
Chapman Valley, Shire of	0
Chittering, Shire of	2
Christmas Island, Shire of	0
Claremont, Town of	12
Cockburn, City of	39
Cocos (Keeling) Islands, Shire of	0
Collie, Shire of	0
Coolgardie, Shire of	0
Coorow, Shire of	0
Corrigin, Shire of	0
Cottesloe, Town of	7
Cranbrook, Shire of	2
Cuballing, Shire of	0

AGENCY	No.
Cue, Shire of	0
Cunderdin, Shire of	2
Dalwallinu, Shire of	0
Dandaragan, Shire of	1
Dardanup, Shire of	1
Denmark, Shire of	4
Derby-West Kimberley, Shire of	3
Donnybrook-Balingup, Shire of	1
Dowerin, Shire of	0
Dumbleyung, Shire of	0
Dundas, Shire of	1
East Fremantle, Town of	0
East Pilbara, Shire of	6
Eastern Metropolitan Regional Council	0
Esperance, Shire of	7
Exmouth, Shire of	3
Fremantle, City of	19
Gingin, Shire of	10
Gnowangerup, Shire of	0
Goomalling, Shire of	0
Gosnells, City of	20
Greater Geraldton, City of	4

AGENCY	No.
Halls Creek, Shire of	0
Harvey, Shire of	2
Irwin, Shire of	0
Jerramungup, Shire of	0
Joondalup, City of	82
Kalamunda, City of	27
Kalgoorlie-Boulder, City of	14
Karratha, City of	15
Katanning, Shire of	14
Kellerberrin, Shire of	1
Kent, Shire of	0
Kojonup, Shire of	1
Kondinin, Shire of	0
Koorda, Shire of	0
Kulin, Shire of	0
Kwinana, City of	9
Lake Grace, Shire of	0
Laverton, Shire of	0
Leonora, Shire of	1
Mandurah, City of	13
Manjimup, Shire of	6
Meekatharra, Shire of	0

AGENCY	No.
Melville, City of	47
Menzies, Shire of	2
Merredin, Shire of	1
Mindarie Regional Council	0
Mingenew, Shire of	0
Moora, Shire of	0
Morawa, Shire of	0
Mosman Park, Town of	10
Mount Magnet, Shire of	0
Mount Marshall, Shire of	0
Mukinbudin, Shire of	0
Mundaring, Shire of	12
Murchison Regional Vermin Council	0
Murchison, Shire of	0
Murray, Shire of	1
Nannup, Shire of	1
Narembeen, Shire of	1
Narrogin, Shire of	1
Nedlands, City of	14
Ngaanyatjarraku, Shire of	0
Northam, Shire of	8
Northampton, Shire of	1

AGENCY	No.
Nungarin, Shire of	0
Peppermint Grove, Shire of	2
Perenjori, Shire of	0
Perth, City of	34
Pingelly, Shire of	0
Plantagenet, Shire of	0
Port Hedland, Town of	12
Quairading, Shire of	0
Ravensthorpe, Shire of	2
Resource Recovery Group	0
Rivers Regional Council	0
Rockingham, City of	24
Sandstone, Shire of	0
Serpentine-Jarrahdale, Shire of	11
Shark Bay, Shire of	0
South Perth, City of	12
Stirling, City of	86
Subiaco, City of	12
Swan, City of	54
Tammin, Shire of	0
Three Springs, Shire of	0
Toodyay, Shire of	0

AGENCY	No.
Trayning, Shire of	0
Upper Gascoyne, Shire of	0
Victoria Park, Town of	10
Victoria Plains, Shire of	1
Vincent, City of	9
Wagin, Shire of	0
Wandering, Shire of	0
Wanneroo, City of	50
Waroona, Shire of	7
West Arthur, Shire of	1
Western Metropolitan Regional Council	0
Westonia, Shire of	0
Wickepin, Shire of	0
Williams, Shire of	0
Wiluna, Shire of	0
Wongan-Ballidu, Shire of	0
Woodanilling, Shire of	0
Wyalkatchem, Shire of	0
Wyndham-East Kimberley, Shire of	1
Yalgoo, Shire of	0
Yilgarn, Shire of	1
York, Shire of	2

AGENCY	No.
<i>Sub-Total: Local Governments</i>	<i>964</i>
Ministers	
Beazley MLA, Hon H M	0
Buti MLA, Hon Dr A D	6
Carey MLA, Hon J N	6
Dawson MLC, Hon S N	0
Ellery MLC, Hon S M	2
Jarvis MLC, Hon J	2
McGurk MLA, Hon S F	1
Michael MLA, Hon D R	5
Papalia MLA, Hon P	9
Punch MLA, Hon D T	1
Quigley MLA, Hon J R	3
Saffioti MLA, Hon R	6
Sanderson MLA, Hon A	4
Templeman MLA, Hon D A	2
Whitby MLA, Hon R R	7
Winton MLA, Hon S E	1
<i>Sub-total: Ministers</i>	<i>55</i>
Police	
Police Force, Western Australia	3,397

AGENCY	No.
<i>Sub-total: Police</i>	<i>3,397</i>
Universities	
Curtin University of Technology	6
Edith Cowan University	13
Murdoch University	6
University of Western Australia, The	7
<i>Sub-total: Universities</i>	<i>32</i>
TOTAL	22,227

SUMMARY	No.	%
Boards, Committees, Commissions, Authorities, Corporations	612	2.8%
Departments (except Police and Health related agencies)	4,263	19.2%
Health Related Agencies	12,904	58.1%
Local Governments	964	4.3%
Ministers	55	0.2%
Police	3,397	15.3%
Universities	32	0.1%
TOTAL	22,227	100

1. The number of access applications received by an agency includes applications that were transferred from another agency; and applications that were subsequently withdrawn by the applicant.
2. If an agency does not appear in this table, it is because the required data was not received in time for publication.

Table 13: Outcome of access applications finalised by agency decision

This table reflects the outcomes of the valid access applications that resulted in an agency decision. It does not include valid access applications that were subsequently withdrawn.

When dealing with a valid access application, the agency may decide to:

- give full access to all of the requested documents;
- give edited access to copies of the requested documents;
- give access but to defer that access under section 25 of the FOI Act;
- give access through a medical practitioner under section 28 of the FOI Act;
- refuse access under section 26 of the FOI Act on the basis that the requested documents cannot be found or do not exist;
- refuse access to all of the requested documents under section 23 of the FOI Act; or
- refuse to deal with the access application under section 20 of the FOI Act on the basis that dealing with it would involve a substantial and unreasonable diversion of the agency's resources.

Note that this table reflects decisions made by agencies. Those agencies that did not decide any access applications in 2023/24 are not listed.

In addition to matters finalised by decision of an agency, 1,899 applications were withdrawn by the applicant prior to a decision being made.

AGENCY	DECISION OUTCOMES													
	In Full		Edited		Deferred		Section 28		Section 26		Section 20		Refused	
	No.	(%)	No.	(%)	No.	(%)	No.	(%)	No.	(%)	No.	(%)	No.	(%)
Boards, Committees, Commissions, Authorities, Corporations														
Aqwest	1	100.0%	0	0.0%	0	0.0%	0	0.0%	0	0.0%	0	0.0%	0	0.0%
Chemistry Centre Western Australia	0	0.0%	2	100.0%	0	0.0%	0	0.0%	0	0.0%	0	0.0%	0	0.0%
DevelopmentWA	0	0.0%	4	66.7%	0	0.0%	0	0.0%	0	0.0%	2	33.3%	0	0.0%
Electoral Commission, Western Australian	0	0.0%	0	0.0%	0	0.0%	0	0.0%	0	0.0%	0	0.0%	0	0.0%
Equal Opportunity Commission	0	0.0%	1	100.0%	0	0.0%	0	0.0%	0	0.0%	0	0.0%	0	0.0%
Forest Products Commission	0	0.0%	4	100.0%	0	0.0%	0	0.0%	0	0.0%	0	0.0%	0	0.0%
Fremantle Port Authority	3	100.0%	0	0.0%	0	0.0%	0	0.0%	0	0.0%	0	0.0%	0	0.0%
Gold Corporation	0	0.0%	0	0.0%	0	0.0%	0	0.0%	0	0.0%	1	33.3%	2	66.7%
Government Employees Superannuation Board	0	0.0%	1	33.3%	0	0.0%	0	0.0%	2	66.7%	0	0.0%	0	0.0%
Greyhound Racing Association, Western Australian	2	100.0%	0	0.0%	0	0.0%	0	0.0%	0	0.0%	0	0.0%	0	0.0%
Horizon Power	0	0.0%	0	0.0%	0	0.0%	0	0.0%	0	0.0%	0	0.0%	0	0.0%
Insurance Commission of Western Australia	0	0.0%	125	100.0%	0	0.0%	0	0.0%	0	0.0%	0	0.0%	0	0.0%
Landgate	1	9.1%	8	72.7%	0	0.0%	0	0.0%	1	9.1%	0	0.0%	1	9.1%
Legal Aid Western Australia	6	30.0%	5	25.0%	0	0.0%	0	0.0%	2	10.0%	4	20.0%	3	15.0%
Legal Practice Board	0	0.0%	3	75.0%	0	0.0%	0	0.0%	1	25.0%	0	0.0%	0	0.0%
Lotteries Commission	0	0.0%	0	0.0%	0	0.0%	0	0.0%	0	0.0%	0	0.0%	0	0.0%
Mental Health Advocacy Service	0	0.0%	3	100.0%	0	0.0%	0	0.0%	0	0.0%	0	0.0%	0	0.0%
Mental Health Commission	0	0.0%	1	100.0%	0	0.0%	0	0.0%	0	0.0%	0	0.0%	0	0.0%
Metropolitan Cemeteries Board	0	0.0%	9	75.0%	1	8.3%	0	0.0%	2	16.7%	0	0.0%	0	0.0%

AGENCY	DECISION OUTCOMES													
	In Full		Edited		Deferred		Section 28		Section 26		Section 20		Refused	
	No.	(%)	No.	(%)	No.	(%)	No.	(%)	No.	(%)	No.	(%)	No.	(%)
Mid West Development Commission	0	0.0%	0	0.0%	0	0.0%	0	0.0%	0	0.0%	0	0.0%	0	0.0%
Pilbara Ports Authority	0	0.0%	0	0.0%	0	0.0%	0	0.0%	0	0.0%	0	0.0%	1	100.0%
Public Advocate, Office of the	0	0.0%	4	80.0%	0	0.0%	0	0.0%	0	0.0%	0	0.0%	1	20.0%
Public Sector Commission	2	40.0%	1	20.0%	0	0.0%	0	0.0%	0	0.0%	0	0.0%	2	40.0%
Public Transport Authority	0	0.0%	16	55.2%	0	0.0%	0	0.0%	3	10.3%	0	0.0%	10	34.5%
Public Trust Office	0	0.0%	0	0.0%	0	0.0%	0	0.0%	1	100.0%	0	0.0%	0	0.0%
Racing and Wagering Western Australia	4	66.7%	2	33.3%	0	0.0%	0	0.0%	0	0.0%	0	0.0%	0	0.0%
Registrar, WA Industrial Relations Commission, Department of the	1	100.0%	0	0.0%	0	0.0%	0	0.0%	0	0.0%	0	0.0%	0	0.0%
Salaries and Allowances Tribunal	0	0.0%	0	0.0%	0	0.0%	0	0.0%	0	0.0%	0	0.0%	0	0.0%
School Curriculum and Standards Authority	0	0.0%	1	16.7%	0	0.0%	0	0.0%	3	50.0%	0	0.0%	2	33.3%
Small Business Development Corporation	1	25.0%	3	75.0%	0	0.0%	0	0.0%	0	0.0%	0	0.0%	0	0.0%
Southern Ports Authority	1	100.0%	0	0.0%	0	0.0%	0	0.0%	0	0.0%	0	0.0%	0	0.0%
Sports Centre Trust (VenuesWest)	0	0.0%	2	66.7%	0	0.0%	0	0.0%	1	33.3%	0	0.0%	0	0.0%
Synergy	0	0.0%	4	57.1%	0	0.0%	0	0.0%	1	14.3%	1	14.3%	1	14.3%
Water Corporation	2	5.3%	29	76.3%	0	0.0%	0	0.0%	6	15.8%	0	0.0%	1	2.6%
Western Power	4	16.7%	18	75.0%	0	0.0%	0	0.0%	0	0.0%	2	8.3%	0	0.0%
WorkCover Western Australia	136	69.4%	31	15.8%	0	0.0%	0	0.0%	26	13.3%	0	0.0%	3	1.5%

AGENCY	DECISION OUTCOMES													
	In Full		Edited		Deferred		Section 28		Section 26		Section 20		Refused	
	No.	(%)	No.	(%)	No.	(%)	No.	(%)	No.	(%)	No.	(%)	No.	(%)
<i>Sub-total: Boards, Committees, Commissions, Authorities, Corporations</i>	164	31.0%	278	52.6%	1	0.2%	0	0.0%	49	9.3%	10	1.9%	27	5.1%
Departments														
Biodiversity, Conservation and Attractions, Department of	11	30.6%	20	55.6%	0	0.0%	0	0.0%	2	5.6%	1	2.8%	2	5.6%
Central Regional TAFE	1	100.0%	0	0.0%	0	0.0%	0	0.0%	0	0.0%	0	0.0%	0	0.0%
Communities, Department of	44	7.6%	441	75.9%	0	0.0%	0	0.0%	76	13.1%	20	3.4%	0	0.0%
Education, Department of	60	33.7%	78	43.8%	1	0.6%	0	0.0%	32	18.0%	1	0.6%	6	3.4%
Energy, Mines, Industry Regulation and Safety, Department of	237	41.7%	92	16.2%	1	0.2%	0	0.0%	169	29.8%	2	0.4%	67	11.8%
Finance, Department of	3	20.0%	7	46.7%	0	0.0%	0	0.0%	2	13.3%	3	20.0%	0	0.0%
Fire and Emergency Services, Department of	185	92.0%	7	3.5%	3	1.5%	0	0.0%	2	1.0%	1	0.5%	3	1.5%
Health, Department of	22	56.4%	3	7.7%	0	0.0%	0	0.0%	6	15.4%	0	0.0%	8	20.5%
Jobs, Tourism, Science and Innovation, Department of	0	0.0%	15	78.9%	0	0.0%	0	0.0%	2	10.5%	1	5.3%	1	5.3%
Justice, Department of	284	19.6%	1007	69.5%	0	0.0%	2	0.1%	66	4.6%	2	0.1%	88	6.1%
Local Government, Sport and Cultural Industries, Department of	37	61.7%	12	20.0%	0	0.0%	0	0.0%	8	13.3%	3	5.0%	0	0.0%
Main Roads Western Australia	14	45.2%	7	22.6%	0	0.0%	0	0.0%	4	12.9%	1	3.2%	5	16.1%
North Metropolitan TAFE	4	66.7%	2	33.3%	0	0.0%	0	0.0%	0	0.0%	0	0.0%	0	0.0%
North Regional TAFE	0	0.0%	1	100.0%	0	0.0%	0	0.0%	0	0.0%	0	0.0%	0	0.0%
Planning, Lands and Heritage, Department of	0	0.0%	63	77.8%	1	1.2%	0	0.0%	13	16.0%	3	3.7%	1	1.2%

AGENCY	DECISION OUTCOMES													
	In Full		Edited		Deferred		Section 28		Section 26		Section 20		Refused	
	No.	(%)	No.	(%)	No.	(%)	No.	(%)	No.	(%)	No.	(%)	No.	(%)
Premier and Cabinet, Department of the	9	15.8%	23	40.4%	0	0.0%	0	0.0%	15	26.3%	1	1.8%	9	15.8%
Primary Industries and Regional Development, Department of	7	18.4%	11	28.9%	0	0.0%	0	0.0%	17	44.7%	0	0.0%	3	7.9%
South Metropolitan TAFE	3	75.0%	0	0.0%	1	25.0%	0	0.0%	0	0.0%	0	0.0%	0	0.0%
South Regional TAFE	7	100.0%	0	0.0%	0	0.0%	0	0.0%	0	0.0%	0	0.0%	0	0.0%
Training and Workforce Development, Department of	0	0.0%	20	71.4%	0	0.0%	0	0.0%	8	28.6%	0	0.0%	0	0.0%
Transport, Department of	95	47.7%	38	19.1%	0	0.0%	0	0.0%	45	22.6%	0	0.0%	21	10.6%
Treasury, Department of	1	12.5%	4	50.0%	0	0.0%	0	0.0%	2	25.0%	0	0.0%	1	12.5%
Water and Environmental Regulation, Department of	36	16.6%	81	37.3%	0	0.0%	0	0.0%	81	37.3%	2	0.9%	17	7.8%
<i>Sub-total: Departments</i>	<i>1060</i>	<i>27.7%</i>	<i>1932</i>	<i>50.5%</i>	<i>7</i>	<i>0.2%</i>	<i>2</i>	<i>0.1%</i>	<i>550</i>	<i>14.4%</i>	<i>41</i>	<i>1.1%</i>	<i>232</i>	<i>6.1%</i>
East Metropolitan Health Services (EMHS)														
C&AHS - Perth Children's Hospital	61	66.3%	3	3.3%	1	1.1%	2	2.2%	2	2.2%	4	4.3%	19	20.7%
Chief Psychiatrist, Office of the	1	25.0%	3	75.0%	0	0.0%	0	0.0%	0	0.0%	0	0.0%	0	0.0%
EMHS - Armadale Kalamunda Group	438	68.3%	177	27.6%	0	0.0%	1	0.2%	19	3.0%	6	0.9%	0	0.0%
EMHS - Corporate Office	1	7.7%	10	76.9%	0	0.0%	0	0.0%	1	7.7%	1	7.7%	0	0.0%
Royal Perth Bentley Group	3184	89.1%	196	5.5%	0	0.0%	3	0.1%	188	5.3%	0	0.0%	3	0.1%
<i>Sub-total: EMHS</i>	<i>3685</i>	<i>85.2%</i>	<i>389</i>	<i>9.0%</i>	<i>1</i>	<i>0.0%</i>	<i>6</i>	<i>0.1%</i>	<i>210</i>	<i>4.9%</i>	<i>11</i>	<i>0.3%</i>	<i>22</i>	<i>0.5%</i>
North Metropolitan Health Services (NHMS)														
Health and Disability Services Complaints Office	1	33.3%	1	33.3%	0	0.0%	0	0.0%	0	0.0%	0	0.0%	1	33.3%

AGENCY	DECISION OUTCOMES													
	In Full		Edited		Deferred		Section 28		Section 26		Section 20		Refused	
	No.	(%)	No.	(%)	No.	(%)	No.	(%)	No.	(%)	No.	(%)	No.	(%)
Health Support Services	0	0.0%	3	100.0%	0	0.0%	0	0.0%	0	0.0%	0	0.0%	0	0.0%
NMHS - Corporate Office	4	36.4%	2	18.2%	0	0.0%	0	0.0%	5	45.5%	0	0.0%	0	0.0%
NMHS - King Edward Memorial Hospital	227	95.4%	1	0.4%	0	0.0%	4	1.7%	5	2.1%	0	0.0%	1	0.4%
NMHS - Mental Health	113	28.0%	282	70.0%	0	0.0%	0	0.0%	4	1.0%	1	0.2%	3	0.7%
NMHS - Osborne Park Hospital	54	100.0%	0	0.0%	0	0.0%	0	0.0%	0	0.0%	0	0.0%	0	0.0%
NMHS - PathWest Laboratory Medicine WA	32	88.9%	0	0.0%	0	0.0%	0	0.0%	2	5.6%	0	0.0%	2	5.6%
NMHS - Sir Charles Gairdner Hospital	856	89.9%	25	2.6%	1	0.1%	1	0.1%	58	6.1%	7	0.7%	4	0.4%
<i>Sub-total: NMHS</i>	<i>1287</i>	<i>75.7%</i>	<i>314</i>	<i>18.5%</i>	<i>1</i>	<i>0.1%</i>	<i>5</i>	<i>0.3%</i>	<i>74</i>	<i>4.4%</i>	<i>8</i>	<i>0.5%</i>	<i>11</i>	<i>0.6%</i>
South Metropolitan Health Services (SMHS)														
SMHS - Fiona Stanley Fremantle Hospital Group	2335	95.4%	15	0.6%	0	0.0%	2	0.1%	93	3.8%	0	0.0%	3	0.1%
SMHS - Rockingham Peel Group	580	88.3%	53	8.1%	1	0.2%	0	0.0%	21	3.2%	2	0.3%	0	0.0%
<i>Sub-total: SMHS</i>	<i>2915</i>	<i>93.9%</i>	<i>68</i>	<i>2.2%</i>	<i>1</i>	<i>0.0%</i>	<i>2</i>	<i>0.1%</i>	<i>114</i>	<i>3.7%</i>	<i>2</i>	<i>0.1%</i>	<i>3</i>	<i>0.1%</i>
Western Australia Country Health Services (WACHS)														
WACHS - Central Office	2	20.0%	7	70.0%	0	0.0%	0	0.0%	0	0.0%	0	0.0%	1	10.0%
WACHS - Goldfields	245	95.7%	0	0.0%	0	0.0%	1	0.4%	9	3.5%	0	0.0%	1	0.4%
WACHS - Great Southern	253	95.5%	1	0.4%	0	0.0%	1	0.4%	10	3.8%	0	0.0%	0	0.0%
WACHS - Kimberley	544	96.1%	0	0.0%	0	0.0%	0	0.0%	22	3.9%	0	0.0%	0	0.0%
WACHS - Midwest	10	2.4%	395	95.6%	0	0.0%	0	0.0%	7	1.7%	1	0.2%	0	0.0%
WACHS - Pilbara	336	95.5%	0	0.0%	0	0.0%	0	0.0%	16	4.5%	0	0.0%	0	0.0%
WACHS - South West	454	85.3%	66	12.4%	0	0.0%	0	0.0%	12	2.3%	0	0.0%	0	0.0%

AGENCY	DECISION OUTCOMES													
	In Full		Edited		Deferred		Section 28		Section 26		Section 20		Refused	
	No.	(%)	No.	(%)	No.	(%)	No.	(%)	No.	(%)	No.	(%)	No.	(%)
WACHS - Wheatbelt	276	95.5%	0	0.0%	0	0.0%	1	0.3%	12	4.2%	0	0.0%	0	0.0%
<i>Sub-total: WACHS</i>	<i>2120</i>	<i>79.0%</i>	<i>469</i>	<i>17.5%</i>	<i>0</i>	<i>0.0%</i>	<i>3</i>	<i>0.1%</i>	<i>88</i>	<i>3.3%</i>	<i>1</i>	<i>0.0%</i>	<i>2</i>	<i>0.1%</i>
<i>Sub-total: Health Related Agencies</i>	<i>10007</i>	<i>84.7%</i>	<i>1240</i>	<i>10.5%</i>	<i>3</i>	<i>0.0%</i>	<i>16</i>	<i>0.1%</i>	<i>486</i>	<i>4.1%</i>	<i>22</i>	<i>0.2%</i>	<i>38</i>	<i>0.3%</i>
Local Governments														
Albany, City of	6	46.2%	7	53.8%	0	0.0%	0	0.0%	0	0.0%	0	0.0%	0	0.0%
Armadale, City of	2	11.8%	14	82.4%	0	0.0%	0	0.0%	0	0.0%	0	0.0%	1	5.9%
Ashburton, Shire of	2	25.0%	2	25.0%	0	0.0%	0	0.0%	4	50.0%	0	0.0%	0	0.0%
Augusta-Margaret River, Shire of	1	5.3%	17	89.5%	0	0.0%	0	0.0%	0	0.0%	1	5.3%	0	0.0%
Bassendean, Town of	0	0.0%	10	90.9%	0	0.0%	0	0.0%	0	0.0%	0	0.0%	1	9.1%
Bayswater, City of	3	17.6%	10	58.8%	0	0.0%	0	0.0%	4	23.5%	0	0.0%	0	0.0%
Belmont, City of	0	0.0%	11	100.0%	0	0.0%	0	0.0%	0	0.0%	0	0.0%	0	0.0%
Bridgetown-Greenbushes, Shire of	4	100.0%	0	0.0%	0	0.0%	0	0.0%	0	0.0%	0	0.0%	0	0.0%
Broome, Shire of	3	42.9%	4	57.1%	0	0.0%	0	0.0%	0	0.0%	0	0.0%	0	0.0%
Bunbury, City of	3	27.3%	8	72.7%	0	0.0%	0	0.0%	0	0.0%	0	0.0%	0	0.0%
Busselton, City of	1	4.5%	21	95.5%	0	0.0%	0	0.0%	0	0.0%	0	0.0%	0	0.0%
Cambridge, Town of	0	0.0%	18	78.3%	0	0.0%	0	0.0%	2	8.7%	0	0.0%	3	13.0%
Canning, City of	2	10.0%	16	80.0%	0	0.0%	0	0.0%	2	10.0%	0	0.0%	0	0.0%
Capel, Shire of	0	0.0%	2	100.0%	0	0.0%	0	0.0%	0	0.0%	0	0.0%	0	0.0%
Carnamah, Shire of	1	100.0%	0	0.0%	0	0.0%	0	0.0%	0	0.0%	0	0.0%	0	0.0%
Carnarvon, Shire of	1	100.0%	0	0.0%	0	0.0%	0	0.0%	0	0.0%	0	0.0%	0	0.0%
Chittering, Shire of	0	0.0%	2	100.0%	0	0.0%	0	0.0%	0	0.0%	0	0.0%	0	0.0%

AGENCY	DECISION OUTCOMES													
	In Full		Edited		Deferred		Section 28		Section 26		Section 20		Refused	
	No.	(%)	No.	(%)	No.	(%)	No.	(%)	No.	(%)	No.	(%)	No.	(%)
Claremont, Town of	1	12.5%	7	87.5%	0	0.0%	0	0.0%	0	0.0%	0	0.0%	0	0.0%
Cockburn, City of	0	0.0%	35	100.0%	0	0.0%	0	0.0%	0	0.0%	0	0.0%	0	0.0%
Cottesloe, Town of	2	28.6%	3	42.9%	0	0.0%	0	0.0%	1	14.3%	0	0.0%	1	14.3%
Cranbrook, Shire of	2	100.0%	0	0.0%	0	0.0%	0	0.0%	0	0.0%	0	0.0%	0	0.0%
Cunderdin, Shire of	2	100.0%	0	0.0%	0	0.0%	0	0.0%	0	0.0%	0	0.0%	0	0.0%
Dandaragan, Shire of	1	100.0%	0	0.0%	0	0.0%	0	0.0%	0	0.0%	0	0.0%	0	0.0%
Dardanup, Shire of	0	0.0%	1	100.0%	0	0.0%	0	0.0%	0	0.0%	0	0.0%	0	0.0%
Denmark, Shire of	0	0.0%	2	100.0%	0	0.0%	0	0.0%	0	0.0%	0	0.0%	0	0.0%
Derby-West Kimberley, Shire of	2	100.0%	0	0.0%	0	0.0%	0	0.0%	0	0.0%	0	0.0%	0	0.0%
Donnybrook-Balingup, Shire of	0	0.0%	0	0.0%	0	0.0%	0	0.0%	1	100.0%	0	0.0%	0	0.0%
Dundas, Shire of	1	100.0%	0	0.0%	0	0.0%	0	0.0%	0	0.0%	0	0.0%	0	0.0%
East Pilbara, Shire of	5	83.3%	1	16.7%	0	0.0%	0	0.0%	0	0.0%	0	0.0%	0	0.0%
Esperance, Shire of	1	16.7%	4	66.7%	0	0.0%	1	16.7%	0	0.0%	0	0.0%	0	0.0%
Exmouth, Shire of	1	33.3%	1	33.3%	0	0.0%	0	0.0%	0	0.0%	1	33.3%	0	0.0%
Fremantle, City of	2	13.3%	13	86.7%	0	0.0%	0	0.0%	0	0.0%	0	0.0%	0	0.0%
Gingin, Shire of	1	11.1%	8	88.9%	0	0.0%	0	0.0%	0	0.0%	0	0.0%	0	0.0%
Gosnells, City of	1	5.3%	18	94.7%	0	0.0%	0	0.0%	0	0.0%	0	0.0%	0	0.0%
Greater Geraldton, City of	0	0.0%	4	100.0%	0	0.0%	0	0.0%	0	0.0%	0	0.0%	0	0.0%
Harvey, Shire of	0	0.0%	0	0.0%	0	0.0%	0	0.0%	0	0.0%	0	0.0%	0	0.0%
Joondalup, City of	5	6.5%	69	89.6%	0	0.0%	0	0.0%	3	3.9%	0	0.0%	0	0.0%
Kalamunda, City of	1	3.8%	22	84.6%	0	0.0%	1	3.8%	1	3.8%	0	0.0%	1	3.8%
Kalgoorlie-Boulder, City of	1	7.1%	9	64.3%	0	0.0%	0	0.0%	4	28.6%	0	0.0%	0	0.0%

AGENCY	DECISION OUTCOMES													
	In Full		Edited		Deferred		Section 28		Section 26		Section 20		Refused	
	No.	(%)	No.	(%)	No.	(%)	No.	(%)	No.	(%)	No.	(%)	No.	(%)
Karratha, City of	2	15.4%	8	61.5%	0	0.0%	0	0.0%	3	23.1%	0	0.0%	0	0.0%
Katanning, Shire of	12	100.0%	0	0.0%	0	0.0%	0	0.0%	0	0.0%	0	0.0%	0	0.0%
Kellerberrin, Shire of	1	100.0%	0	0.0%	0	0.0%	0	0.0%	0	0.0%	0	0.0%	0	0.0%
Kojonup, Shire of	0	0.0%	1	100.0%	0	0.0%	0	0.0%	0	0.0%	0	0.0%	0	0.0%
Kwinana, City of	0	0.0%	9	100.0%	0	0.0%	0	0.0%	0	0.0%	0	0.0%	0	0.0%
Leonora, Shire of	1	100.0%	0	0.0%	0	0.0%	0	0.0%	0	0.0%	0	0.0%	0	0.0%
Mandurah, City of	0	0.0%	7	63.6%	0	0.0%	0	0.0%	1	9.1%	0	0.0%	3	27.3%
Manjimup, Shire of	0	0.0%	4	100.0%	0	0.0%	0	0.0%	0	0.0%	0	0.0%	0	0.0%
Melville, City of	1	2.5%	39	97.5%	0	0.0%	0	0.0%	0	0.0%	0	0.0%	0	0.0%
Menzies, Shire of	1	50.0%	1	50.0%	0	0.0%	0	0.0%	0	0.0%	0	0.0%	0	0.0%
Merredin, Shire of	0	0.0%	1	100.0%	0	0.0%	0	0.0%	0	0.0%	0	0.0%	0	0.0%
Mosman Park, Town of	0	0.0%	1	16.7%	4	66.7%	0	0.0%	0	0.0%	0	0.0%	1	16.7%
Mundaring, Shire of	0	0.0%	12	100.0%	0	0.0%	0	0.0%	0	0.0%	0	0.0%	0	0.0%
Murray, Shire of	0	0.0%	1	100.0%	0	0.0%	0	0.0%	0	0.0%	0	0.0%	0	0.0%
Nannup, Shire of	0	0.0%	0	0.0%	0	0.0%	0	0.0%	0	0.0%	0	0.0%	0	0.0%
Narembeen, Shire of	0	0.0%	0	0.0%	0	0.0%	0	0.0%	1	100.0%	0	0.0%	0	0.0%
Narrogin, Shire of	1	100.0%	0	0.0%	0	0.0%	0	0.0%	0	0.0%	0	0.0%	0	0.0%
Nedlands, City of	2	15.4%	5	38.5%	3	23.1%	0	0.0%	2	15.4%	0	0.0%	1	7.7%
Northam, Shire of	1	14.3%	3	42.9%	0	0.0%	0	0.0%	1	14.3%	0	0.0%	2	28.6%
Northampton, Shire of	1	100.0%	0	0.0%	0	0.0%	0	0.0%	0	0.0%	0	0.0%	0	0.0%
Peppermint Grove, Shire of	1	50.0%	0	0.0%	0	0.0%	0	0.0%	0	0.0%	0	0.0%	1	50.0%
Perth, City of	0	0.0%	30	93.8%	0	0.0%	0	0.0%	0	0.0%	0	0.0%	2	6.3%

AGENCY	DECISION OUTCOMES													
	In Full		Edited		Deferred		Section 28		Section 26		Section 20		Refused	
	No.	(%)	No.	(%)	No.	(%)	No.	(%)	No.	(%)	No.	(%)	No.	(%)
Port Hedland, Town of	4	33.3%	7	58.3%	0	0.0%	0	0.0%	1	8.3%	0	0.0%	0	0.0%
Ravensthorpe, Shire of	0	0.0%	2	100.0%	0	0.0%	0	0.0%	0	0.0%	0	0.0%	0	0.0%
Rockingham, City of	1	6.7%	13	86.7%	0	0.0%	0	0.0%	1	6.7%	0	0.0%	0	0.0%
Serpentine-Jarrahdale, Shire of	3	37.5%	5	62.5%	0	0.0%	0	0.0%	0	0.0%	0	0.0%	0	0.0%
South Perth, City of	0	0.0%	9	81.8%	0	0.0%	0	0.0%	0	0.0%	0	0.0%	2	18.2%
Stirling, City of	0	0.0%	69	100.0%	0	0.0%	0	0.0%	0	0.0%	0	0.0%	0	0.0%
Subiaco, City of	2	18.2%	8	72.7%	0	0.0%	0	0.0%	0	0.0%	1	9.1%	0	0.0%
Swan, City of	1	1.8%	50	89.3%	0	0.0%	0	0.0%	3	5.4%	1	1.8%	1	1.8%
Victoria Park, Town of	0	0.0%	9	100.0%	0	0.0%	0	0.0%	0	0.0%	0	0.0%	0	0.0%
Victoria Plains, Shire of	0	0.0%	1	100.0%	0	0.0%	0	0.0%	0	0.0%	0	0.0%	0	0.0%
Vincent, City of	2	25.0%	6	75.0%	0	0.0%	0	0.0%	0	0.0%	0	0.0%	0	0.0%
Wanneroo, City of	0	0.0%	39	90.7%	0	0.0%	0	0.0%	1	2.3%	0	0.0%	3	7.0%
Waroona, Shire of	0	0.0%	3	17.6%	0	0.0%	0	0.0%	5	29.4%	7	41.2%	2	11.8%
West Arthur, Shire of	1	100.0%	0	0.0%	0	0.0%	0	0.0%	0	0.0%	0	0.0%	0	0.0%
Wyndham-East Kimberley, Shire of	0	0.0%	1	100.0%	0	0.0%	0	0.0%	0	0.0%	0	0.0%	0	0.0%
Yilgarn, Shire of	0	0.0%	1	100.0%	0	0.0%	0	0.0%	0	0.0%	0	0.0%	0	0.0%
York, Shire of	0	0.0%	2	100.0%	0	0.0%	0	0.0%	0	0.0%	0	0.0%	0	0.0%
<i>Sub-total: Local Governments</i>	<i>96</i>	<i>11.1%</i>	<i>686</i>	<i>79.0%</i>	<i>7</i>	<i>0.8%</i>	<i>2</i>	<i>0.2%</i>	<i>41</i>	<i>4.7%</i>	<i>11</i>	<i>1.3%</i>	<i>25</i>	<i>2.9%</i>
Ministers														
Buti MLA, Hon Dr T A	1	20.0%	4	80.0%	0	0.0%	0	0.0%	0	0.0%	0	0.0%	0	0.0%
Carey MLA, Hon J N	2	40.0%	1	20.0%	0	0.0%	0	0.0%	2	40.0%	0	0.0%	0	0.0%
Ellery MLC, Hon S M	0	0.0%	0	0.0%	0	0.0%	0	0.0%	0	0.0%	0	0.0%	0	0.0%

AGENCY	DECISION OUTCOMES													
	In Full		Edited		Deferred		Section 28		Section 26		Section 20		Refused	
	No.	(%)	No.	(%)	No.	(%)	No.	(%)	No.	(%)	No.	(%)	No.	(%)
Jarvis MLC, Hon J	1	50.0%	0	0.0%	0	0.0%	0	0.0%	1	50.0%	0	0.0%	0	0.0%
McGurk MLA, Hon S F	0	0.0%	0	0.0%	0	0.0%	0	0.0%	0	0.0%	0	0.0%	1	100.0%
Michael MLA, Hon D R	0	0.0%	3	50.0%	0	0.0%	0	0.0%	1	16.7%	1	16.7%	1	16.7%
Papalia MLA, Hon P	1	7.1%	4	28.6%	0	0.0%	0	0.0%	4	28.6%	5	35.7%	0	0.0%
Punch MLA, Hon D T	0	0.0%	1	100.0%	0	0.0%	0	0.0%	0	0.0%	0	0.0%	0	0.0%
Quigley MLA, Hon J R	2	50.0%	0	0.0%	0	0.0%	0	0.0%	2	50.0%	0	0.0%	0	0.0%
Saffioti MLA, Hon R	0	0.0%	3	60.0%	0	0.0%	0	0.0%	2	40.0%	0	0.0%	0	0.0%
Sanderson MLA, Hon A	0	0.0%	7	87.5%	0	0.0%	0	0.0%	1	12.5%	0	0.0%	0	0.0%
Templeman MLA, Hon D A	0	0.0%	1	100.0%	0	0.0%	0	0.0%	0	0.0%	0	0.0%	0	0.0%
Whitby MLA, Hon R R	1	12.5%	3	37.5%	0	0.0%	0	0.0%	1	12.5%	1	12.5%	2	25.0%
Winton MLA, Hon S E	0	0.0%	0	0.0%	0	0.0%	0	0.0%	0	0.0%	0	0.0%	0	0.0%
<i>Sub-total: Ministers</i>	<i>8</i>	<i>13.3%</i>	<i>27</i>	<i>45.0%</i>	<i>0</i>	<i>0.0%</i>	<i>0</i>	<i>0.0%</i>	<i>14</i>	<i>23.3%</i>	<i>7</i>	<i>11.7%</i>	<i>4</i>	<i>6.7%</i>
Police														
Police Force, Western Australia	777	30.1%	810	31.4%	0	0.0%	0	0.0%	62	2.4%	16	0.6%	914	35.4%
<i>Sub-total: Police</i>	<i>777</i>	<i>30.1%</i>	<i>810</i>	<i>31.4%</i>	<i>0</i>	<i>0.0%</i>	<i>0</i>	<i>0.0%</i>	<i>62</i>	<i>2.4%</i>	<i>16</i>	<i>0.6%</i>	<i>914</i>	<i>35.4%</i>
Universities														
Curtin University of Technology	0	0.0%	1	20.0%	0	0.0%	0	0.0%	2	40.0%	1	20.0%	1	20.0%
Edith Cowan University	4	40.0%	6	60.0%	0	0.0%	0	0.0%	0	0.0%	0	0.0%	0	0.0%

AGENCY	DECISION OUTCOMES													
	In Full		Edited		Deferred		Section 28		Section 26		Section 20		Refused	
	No.	(%)	No.	(%)	No.	(%)	No.	(%)	No.	(%)	No.	(%)	No.	(%)
Murdoch University	0	0.0%	6	100.0%	0	0.0%	0	0.0%	0	0.0%	0	0.0%	0	0.0%
University of Western Australia, The	0	0.0%	3	75.0%	0	0.0%	0	0.0%	0	0.0%	0	0.0%	1	25.0%
<i>Sub-total: Universities</i>	<i>4</i>	<i>16.0%</i>	<i>16</i>	<i>64.0%</i>	<i>0</i>	<i>0.0%</i>	<i>0</i>	<i>0.0%</i>	<i>2</i>	<i>8.0%</i>	<i>1</i>	<i>4.0%</i>	<i>2</i>	<i>8.0%</i>
TOTAL	12,116	61.5%	4,989	25.3%	18	0.1%	20	0.1%	1,204	6.1%	108	0.5%	1,242	6.3%

AGENCY	DECISION OUTCOMES													
	In Full		Edited		Deferred		Section 28		Section 26		Section 20		Refused	
	No.	(%)	No.	(%)	No.	(%)	No.	(%)	No.	(%)	No.	(%)	No.	(%)
Boards, Committees, Commissions, Authorities, Corporations	164	31.0%	278	52.6%	1	0.2%	0	0.0%	49	9.3%	10	1.9%	27	5.1%
Departments (except Police and Health related agencies)	1,060	27.7%	1,932	50.5%	7	0.2%	2	0.1%	550	14.4%	41	1.1%	232	6.1%
Health Related Agencies	10,007	84.7%	1,240	10.5%	3	0.0%	16	0.1%	486	4.1%	22	0.2%	38	0.3%
Local Governments	96	11.1%	686	79.0%	7	0.8%	2	0.2%	41	4.7%	11	1.3%	25	2.9%
Ministers	8	13.3%	27	45.0%	0	0.0%	0	0.0%	14	23.3%	7	11.7%	4	6.7%
WA Police	777	30.1%	810	31.4%	0	0.0%	0	0.0%	62	2.4%	16	0.6%	914	35.4%
Universities	4	16.0%	16	64.0%	0	0.0%	0	0.0%	2	8.0%	1	4.0%	2	8.0%
TOTAL	12,116	61.5%	4,989	25.3%	18	0.1%	20	0.1%	1,204	6.1%	108	0.5%	1,242	6.3%
GRAND TOTAL	19,697													

Table 14: Number of times exemption clauses were used by agencies

This table shows those agencies that claimed exemptions to refuse access to documents in part or in full. An agency may refuse access to a document if it contains information that is exempt under one of the exemptions listed in Schedule 1 to the FOI Act.

AGENCY CATEGORY	EXEMPTION CLAUSE															
	(Schedule 1 of the FOI Act)															
	1	2	3	4	4A	5	6	7	8	9	10	11	12	13	14	15
Boards, Committees, Commissions, Authorities, Corporations																
Chemistry Centre Western Australia	0	0	2	0	0	0	0	0	1	0	0	0	0	0	0	0
DevelopmentWA	2	0	3	1	0	0	0	1	0	0	0	0	1	0	0	0
Equal Opportunity Commission	0	0	0	0	0	0	1	1	0	0	0	0	0	0	0	0
Fremantle Port Authority	0	0	1	0	0	0	0	0	0	0	0	0	0	0	0	0
Gold Corporation	0	0	0	2	0	0	1	0	2	0	0	1	0	0	0	0
Government Employees Superannuation Board	0	0	1	0	0	0	0	1	0	0	0	0	0	0	0	0
Insurance Commission of Western Australia	0	0	129	0	0	0	112	21	2	0	0	0	0	0	0	0
Landgate	0	0	2	0	0	0	1	1	0	0	0	0	0	0	0	0
Legal Aid Western Australia	0	0	0	0	0	0	0	2	0	0	0	0	0	0	0	0
Legal Practice Board	0	0	3	0	0	0	1	0	0	0	0	0	0	0	0	0
Mental Health Commission	1	0	1	0	0	0	0	1	0	0	0	0	0	0	0	0
Pilbara Ports Authority	0	0	0	0	0	0	0	0	1	0	0	0	0	0	0	0
Public Advocate, Office of the	0	0	5	0	0	0	0	0	0	0	0	0	0	0	0	0
Public Sector Commission	1	0	1	0	0	0	0	0	0	0	0	0	0	0	0	0
Public Transport Authority	0	0	25	4	0	2	1	0	1	0	0	0	0	0	0	0
Public Trust Office	0	0	0	0	0	0	0	0	1	0	0	0	0	0	0	0
Racing and Wagering Western Australia	0	0	2	0	0	0	0	0	0	0	0	0	0	0	0	0

AGENCY CATEGORY	EXEMPTION CLAUSE															
	(Schedule 1 of the FOI Act)															
	1	2	3	4	4A	5	6	7	8	9	10	11	12	13	14	15
School Curriculum and Standards Authority	0	0	1	2	0	0	0	0	0	0	0	0	0	0	0	0
Small Business Development Corporation	0	0	3	1	0	0	3	1	1	0	0	0	0	0	0	0
Sports Centre Trust (VenuesWest)	0	0	2	0	0	0	0	0	0	0	0	0	0	0	0	0
Synergy	1	0	7	0	0	0	1	0	0	0	0	0	0	0	0	0
Water Corporation	3	0	29	4	0	1	4	1	0	0	0	0	0	0	0	0
WorkCover Western Australia	0	0	33	1	0	0	2	1	0	0	0	0	0	0	0	0
Sub-Total: Boards, Committees, Commissions, Authorities, Corporations	8	0	250	15	0	3	127	31	9	0	0	1	1	0	0	0
Departments																
Biodiversity, Conservation and Attractions, Department of	0	0	16	4	0	4	3	0	3	0	0	0	1	0	0	0
Communities, Department of	1	1	455	4	0	109	2	8	15	0	2	3	7	1	107	0
Education, Department of	4	1	75	2	0	2	1	1	4	0	0	0	0	0	0	0
Energy, Mines, Industry Regulation and Safety, Department of	2	0	50	52	0	15	0	9	2	0	0	0	0	0	3	0
Finance, Department of	0	0	2	3	0	4	0	3	1	0	0	0	0	0	0	0
Fire and Emergency Services, Department of	0	0	10	10	0	3	1	1	1	0	2	0	0	0	0	0
Health, Department of	5	0	2	1	0	0	2	2	0	0	0	0	2	0	0	0
Jobs, Tourism, Science and Innovation, Department of	2	0	14	6	0	0	1	2	0	0	5	0	1	0	0	0
Justice, Department of	2	0	1006	1	0	91	2	0	4	0	0	185	0	0	10	0
Local Government, Sport and Cultural Industries, Department of	1	0	10	0	0	3	4	4	2	0	0	0	0	0	0	0

AGENCY CATEGORY	EXEMPTION CLAUSE															
	(Schedule 1 of the FOI Act)															
	1	2	3	4	4A	5	6	7	8	9	10	11	12	13	14	15
Main Roads Western Australia	0	0	3	0	0	0	2	0	0	0	0	0	1	0	0	0
North Metropolitan TAFE	0	0	0	0	0	0	0	0	2	0	0	1	0	0	0	0
Planning, Lands and Heritage, Department of	2	0	7	5	0	3	3	1	3	0	2	0	1	0	0	0
Premier and Cabinet, Department of the	13	2	14	9	0	0	3	8	0	0	2	0	3	0	0	0
Primary Industries and Regional Development, Department of	2	0	7	2	0	1	1	2	2	0	0	0	2	0	0	0
Training and Workforce Development, Department of	0	0	20	0	0	0	0	0	0	0	1	0	0	0	0	0
Transport, Department of	1	0	51	1	0	1	1	0	2	0	0	1	1	0	0	0
Treasury, Department of	5	0	0	2	0	0	2	0	0	0	0	0	0	0	0	0
Water and Environmental Regulation, Department of	2	0	10	8	0	11	5	4	53	0	0	0	4	0	0	0
Sub-Total: Departments	42	4	1752	110	0	247	33	45	94	0	14	190	23	1	120	0
East Metropolitan Health Services (EMHS)																
C&AHS - Perth Children's Hospital	0	0	18	2	0	0	2	1	0	0	0	0	1	0	0	0
Chief Psychiatrist, Office of the	0	0	0	0	0	0	1	0	0	0	0	0	0	0	0	0
EMHS - Armadale Kalamunda Group	0	0	177	0	0	0	0	0	0	0	0	0	0	0	0	0
EMHS - Corporate Office	0	0	9	0	0	0	0	0	0	0	0	0	0	0	0	0
Royal Perth Bentley Group	0	0	197	0	0	0	0	0	0	0	0	0	0	0	0	0
Sub-total: EMHS	0	0	401	2	0	0	3	1	0	0	0	0	1	0	0	0
North Metropolitan Health Services (NMHS)																
Health and Disability Services Complaints Office	0	0	1	0	0	0	0	0	0	0	0	0	0	0	1	0
Health Support Services	0	0	1	0	0	0	0	1	0	0	0	0	0	0	0	0

AGENCY CATEGORY	EXEMPTION CLAUSE															
	(Schedule 1 of the FOI Act)															
	1	2	3	4	4A	5	6	7	8	9	10	11	12	13	14	15
NMHS - Corporate Office	0	0	0	0	0	0	0	0	1	0	0	1	0	0	0	0
NMHS - King Edward Memorial Hospital	0	0	1	0	0	0	0	0	0	0	0	0	0	0	0	0
NMHS - Mental Health	0	0	281	0	0	3	0	0	1	0	0	3	0	0	0	0
NMHS - PathWest Laboratory Medicine WA	0	0	2	0	0	0	0	0	0	0	0	0	0	0	0	0
NMHS - Sir Charles Gairdner Hospital	0	0	29	0	0	0	0	0	0	0	0	0	0	0	0	0
Sub-total: NMHS	0	0	315	0	0	3	0	1	2	0	0	4	0	0	1	0
South Metropolitan Health Services (SMHS)																
SMHS - Fiona Stanley Fremantle Hospital Group	0	0	15	0	0	1	0	0	0	0	0	0	0	0	0	0
Sub-total: SMHS	0	0	15	0	0	1	0	0	0	0	0	0	0	0	0	0
Western Australia Country Health Services (WACHS)																
WACHS - Central Office	0	0	6	0	0	0	1	2	3	0	0	0	0	0	0	0
WACHS - Great Southern	0	0	1	0	0	0	0	0	0	0	0	0	0	0	0	0
WACHS - Midwest	0	0	1	0	0	0	0	0	0	0	0	0	0	0	0	0
Sub-total: WACHS	0	0	8	0	0	0	1	2	3	0	0	0	0	0	0	0
Sub-total: Health Related Agencies	0	0	739	2	0	4	4	4	5	0	0	4	1	0	1	0
Local Governments																
Albany, City of	0	0	7	0	0	0	0	1	0	0	0	0	0	0	0	0
Armadale, City of	0	0	14	0	0	1	0	5	0	0	0	0	0	0	0	0
Ashburton, Shire of	0	0	1	1	0	0	1	1	1	0	0	0	0	0	0	0
Augusta-Margaret River, Shire of	0	0	14	0	0	3	1	0	0	0	0	0	0	0	0	0
Bassendean, Town of	0	0	1	0	0	0	0	0	1	0	0	0	0	0	0	0
Bayswater, City of	0	0	10	0	0	0	0	1	0	0	0	0	0	0	0	0

AGENCY CATEGORY	EXEMPTION CLAUSE															
	(Schedule 1 of the FOI Act)															
	1	2	3	4	4A	5	6	7	8	9	10	11	12	13	14	15
Belmont, City of	0	0	7	6	0	0	0	0	0	0	0	0	0	0	0	0
Broome, Shire of	0	0	5	0	0	0	0	0	0	0	0	0	0	0	0	0
Bunbury, City of	0	0	6	2	0	0	0	0	0	0	0	0	0	0	0	0
Cambridge, Town of	0	0	24	5	0	0	2	1	1	0	1	0	0	0	0	0
Capel, Shire of	0	0	2	0	0	0	0	0	0	0	0	0	0	0	0	0
Claremont, Town of	0	0	7	1	0	0	1	2	0	0	0	0	0	0	0	0
Cockburn, City of	0	0	1	0	0	0	0	0	0	0	0	0	0	0	0	0
Cottesloe, Town of	0	0	4	2	0	0	0	1	2	0	0	0	0	0	0	0
Dardanup, Shire of	0	0	1	0	0	0	0	0	0	0	0	0	0	0	0	0
Denmark, Shire of	0	0	2	0	0	0	0	0	0	0	0	0	0	0	0	0
East Pilbara, Shire of	0	0	0	1	0	0	0	4	0	0	0	0	0	0	0	0
Esperance, Shire of	0	0	5	0	0	0	0	0	0	0	0	0	0	0	0	0
Fremantle, City of	0	0	13	1	0	0	0	2	0	0	0	0	0	0	0	0
Gingin, Shire of	0	0	5	1	0	0	0	2	0	0	0	0	0	0	0	0
Greater Geraldton, City of	0	0	1	0	0	0	0	0	0	0	0	0	0	0	0	0
Joondalup, City of	0	0	63	1	0	13	3	0	0	0	0	0	0	0	0	0
Kalamunda, City of	0	0	0	0	0	1	0	0	0	0	0	0	0	0	0	0
Kalgoorlie-Boulder, City of	0	0	9	0	0	0	0	0	0	0	0	0	0	0	0	0
Kwinana, City of	0	0	8	0	0	0	0	0	0	0	0	0	0	0	0	0
Mandurah, City of	0	0	11	1	0	0	0	1	0	0	0	0	0	0	0	0
Manjimup, Shire of	0	0	4	1	0	0	0	0	1	0	0	0	0	0	0	0
Melville, City of	0	0	39	10	0	0	1	3	3	0	0	2	1	0	0	0
Mosman Park, Town of	0	0	6	3	0	1	2	2	0	0	0	0	0	0	0	0

AGENCY CATEGORY	EXEMPTION CLAUSE															
	(Schedule 1 of the FOI Act)															
	1	2	3	4	4A	5	6	7	8	9	10	11	12	13	14	15
Mundaring, Shire of	0	0	12	0	0	0	0	2	0	0	0	0	0	0	0	0
Perth, City of	0	0	6	5	0	9	4	3	0	0	0	1	0	0	0	0
Serpentine-Jarrahdale, Shire of	0	0	5	0	0	0	0	0	0	0	0	0	0	0	0	0
South Perth, City of	0	0	10	2	0	1	0	0	0	0	0	0	0	0	0	0
Stirling, City of	0	0	69	1	0	10	0	2	2	0	0	0	0	0	0	0
Subiaco, City of	0	0	8	1	0	1	0	1	2	0	0	0	0	0	0	0
Swan, City of	0	0	51	34	0	2	2	2	0	0	0	0	0	0	0	0
Victoria Park, Town of	0	0	8	1	0	0	0	2	0	0	0	0	0	0	0	0
Victoria Plains, Shire of	0	0	1	0	0	0	0	0	0	0	0	0	0	0	0	0
Vincent, City of	0	0	6	0	0	0	0	0	0	0	0	0	0	0	0	0
Wanneroo, City of	0	0	40	1	0	1	0	0	0	0	0	0	0	0	0	0
Waroon, Shire of	0	0	1	1	0	1	0	1	1	0	0	0	0	0	0	0
Sub-total: Local Governments	0	0	487	82	0	44	17	39	14	0	1	3	1	0	0	0
Ministers																
Buti MLA, Hon Dr T A	1	0	3	0	0	0	0	0	0	0	0	0	1	0	0	0
Carey MLA, Hon J N	0	0	1	0	0	0	0	0	0	0	0	0	0	0	0	0
McGurk MLA, Hon S F	1	0	0	0	0	0	0	0	0	0	0	0	0	0	0	0
Michael MLA, Hon D R	1	0	1	1	0	0	0	1	0	0	0	0	1	0	0	0
Papalia MLA, Hon P	3	0	6	0	0	0	0	0	0	0	0	0	3	0	0	0
Punch MLA, Hon D T	1	0	0	0	0	0	0	0	0	0	0	0	1	0	0	0
Quigley MLA, Hon J R	1	0	0	0	0	0	2	0	0	0	0	0	0	0	0	0
Saffioti MLA, Hon R	3	1	3	0	0	0	1	0	0	0	0	0	1	0	0	0
Sanderson MLA, Hon A	3	0	6	1	0	0	1	0	0	0	0	0	2	0	0	0

AGENCY CATEGORY	EXEMPTION CLAUSE															
	(Schedule 1 of the FOI Act)															
	1	2	3	4	4A	5	6	7	8	9	10	11	12	13	14	15
Templeman MLA, Hon D A	1	0	0	1	0	0	0	0	0	0	0	0	1	0	0	0
Whitby MLA, Hon R R	2	0	3	0	0	0	0	0	0	0	0	0	0	0	0	0
Sub-Total: Ministers	17	1	23	3	0	0	4	1	0	0	0	0	10	0	0	0
Police Force, Western Australia	3	0	1,001	2	0	209	1	3	5	0	0	8	5	0	4	0
Sub-total: Police	3	0	1,001	2	0	209	1	3	5	0	0	8	5	0	4	0
Universities																
Curtin University of Technology	0	0	2	0	0	1	0	0	1	0	0	0	0	0	0	0
Edith Cowan University	0	0	5	0	0	0	0	0	0	0	0	0	0	0	0	0
Murdoch University	0	0	6	0	0	0	0	0	1	0	0	0	0	0	0	0
University of Western Australia, The	0	0	3	1	0	0	0	0	3	0	0	1	0	0	0	0
Sub-total: Universities	0	0	16	1	0	1	0	0	5	0	0	1	0	0	0	0
TOTAL	70	5	4,268	215	0	508	186	123	132	0	15	207	41	1	125	0

AGENCY CATEGORY	EXEMPTION CLAUSE															
	(Schedule 1 of the FOI Act)															
	1	2	3	4	4A	5	6	7	8	9	10	11	12	13	14	15
Boards, Committees, Commissions, Authorities, Corporations	8	0	250	15	0	3	127	31	9	0	0	1	1	0	0	0
Departments (except Police and Health related agencies)	42	4	1,752	110	0	247	33	45	94	0	14	190	23	1	120	0
Health Related Agencies	0	0	739	2	0	4	4	4	5	0	0	4	1	0	1	0
Local Governments	0	0	487	82	0	44	17	39	14	0	1	3	1	0	0	0
Ministers	17	1	23	3	0	0	4	1	0	0	0	0	10	0	0	0
WA Police	3	0	1,001	2	0	209	1	3	5	0	0	8	5	0	4	0
Universities	0	0	16	1	0	1	0	0	5	0	0	1	0	0	0	0
TOTAL	70	5	4,268	215	0	508	186	123	132	0	15	207	41	1	125	0

Table 15: Outcome of applications for internal review

This table reports the outcome of internal review applications made to agencies by parties (access applicants or third parties).

Parties can seek review if they are aggrieved by the agency's decision, firstly by making an application for internal review to the agency that made the decision. Internal review is not available on a decision made by a Minister or the principal officer of an agency.

Further information about review rights is available in our publication [Review of agency decisions](#).

Note: Agencies may carry-over applications from previous years.

AGENCY	Requests received	OUTCOME			
		Decision Confirmed	Decision Varied	Decision Reversed	Withdrawn
Boards, Committees, Commissions, Authorities, Corporations					
DevelopmentWA	2	1	1	0	0
Electoral Commission, Western Australian	1	0	0	0	0
Gold Corporation	1	1	0	0	0
Insurance Commission of Western Australia	1	1	0	0	0
Landgate	1	0	1	0	0
Legal Practice Board	3	0	3	0	0
Metropolitan Cemeteries Board	5	4	1	0	0
Public Transport Authority	2	2	0	0	0
Public Trust Office	1	1	0	0	0
Small Business Development Corporation	1	0	1	0	0
Synergy	1	0	0	0	0
Water Corporation	11	8	3	0	0
Western Power	3	2	1	0	0
Sub-total: Boards, Committees, Commissions, Authorities, Corporations	33	20	11	0	0

AGENCY	Requests received	OUTCOME			
		Decision Confirmed	Decision Varied	Decision Reversed	Withdrawn
Departments (except Police and Health related agencies)					
Biodiversity, Conservation and Attractions, Department of	5	2	2	0	0
Communities, Department of	16	11	4	0	1
Education, Department of	14	9	4	1	0
Energy, Mines, Industry Regulation and Safety, Department of	21	6	12	0	0
Fire and Emergency Services, Department of	8	5	1	0	1
Health, Department of	1	1	0	0	0
Jobs, Tourism, Science and Innovation, Department of	1	1	0	0	0
Justice, Department of	18	11	7	0	0
Local Government, Sport and Cultural Industries, Department of	5	4	1	0	0
North Metropolitan TAFE	1	1	0	0	0
Planning, Lands and Heritage, Department of	7	3	4	0	0
Premier and Cabinet, Department of the	9	6	4	0	0
Primary Industries and Regional Development, Department of	3	1	1	0	0
South Regional TAFE	7	7	0	0	0
Transport, Department of	3	2	1	0	0
Water and Environmental Regulation, Department of	8	6	1	0	0
Sub-total: Departments (except Police and Health related agencies)	127	76	42	1	2
East Metropolitan Health Services (EMHS)					
C&AHS - Perth Children's Hospital	6	4	2	0	0
Chief Psychiatrist, Office of the	0	4	0	0	0
EMHS - Corporate Office	1	1	0	0	0

AGENCY	Requests received	OUTCOME			
		Decision Confirmed	Decision Varied	Decision Reversed	Withdrawn
Royal Perth Bentley Group	5	4	1	0	0
<i>Sub-total: EMHS</i>	12	13	3	0	0
North Metropolitan Health Services (NMHS)					
NMHS - Mental Health	3	3	0	0	0
NMHS - PathWest Laboratory Medicine WA	1	0	1	0	0
NMHS - Sir Charles Gairdner Hospital	5	4	1	0	0
<i>Sub-total: NMHS</i>	9	7	2	0	0
Western Australia Country Health Services (WACHS)					
WACHS - Central Office	1	1	0	0	0
WACHS - South West	1	0	1	0	0
WACHS - Wheatbelt	1	1	0	0	0
<i>Sub-total: WACHS</i>	3	2	1	0	0
<i>Sub-total: Health Related Agencies</i>	24	22	6	0	0
Local Governments					
Albany, City of	2	2	0	0	0
Ashburton, Shire of	1	0	1	0	0
Bassendean, Town of	2	2	0	0	0
Belmont, City of	1	1	0	0	0
Cambridge, Town of	7	6	1	0	0
Capel, Shire of	0	2	0	0	0
Carnamah, Shire of	0	1	0	0	0
Claremont, Town of	1	1	0	0	0

AGENCY	Requests received	OUTCOME			
		Decision Confirmed	Decision Varied	Decision Reversed	Withdrawn
Denmark, Shire of	1	1	0	0	0
East Pilbara, Shire of	1	1	0	0	0
Gingin, Shire of	1	1	0	0	0
Gosnells, City of	2	1	1	0	0
Joondalup, City of	6	3	3	0	0
Katanning, Shire of	0	12	0	0	2
Mandurah, City of	1	1	0	0	0
Melville, City of	11	10	1	0	0
Menzies, Shire of	0	2	0	0	0
Mosman Park, Town of	5	1	3	0	0
Murray, Shire of	0	1	0	0	0
Perth, City of	3	2	1	0	0
Port Hedland, Town of	0	12	0	0	0
Ravensthorpe, Shire of	0	2	0	0	0
Rockingham, City of	1	1	0	0	0
South Perth, City of	2	2	0	0	0
Stirling, City of	4	2	2	0	0
Subiaco, City of	1	1	0	0	0
Swan, City of	4	2	2	0	0
Victoria Park, Town of	1	1	0	0	0
Victoria Plains, Shire of	1	0	1	0	0
Wanneroo, City of	5	4	0	0	0

AGENCY	Requests received	OUTCOME			
		Decision Confirmed	Decision Varied	Decision Reversed	Withdrawn
Wyndham-East Kimberley, Shire of	0	1	0	0	0
<i>Sub-total: Local Governments</i>	64	79	16	0	2
Police					
Police Force, Western Australia	60	36	21	1	2
<i>Sub-total: Police</i>	60	36	21	1	2
Universities					
Edith Cowan University	2	2	0	0	0
<i>Sub-total: Universities</i>	2	2	0	0	0
TOTAL	310	235	96	2	6

SUMMARY	Requests received	OUTCOME			
		Decision Confirmed	Decision Varied	Decision Reversed	Withdrawn
Boards, Committees, Commissions, Authorities, Corporations	33	20	11	0	0
Departments (except Police and Health related agencies)	127	76	42	1	2
Health Related Agencies	24	22	6	0	0
Local Governments	64	79	16	0	2
Ministers	0	0	0	0	0
Police	60	36	21	1	2
Universities	2	2	0	0	0
TOTAL	310	235	96	2	6

Table 16: Applications for amendment of personal information

This table reports the number of valid applications for amendment of personal information made to agencies, and the outcome of those applications.

More information about amendment of personal information is available in our publication [Amendment of personal information](#).

Note: Agencies may carry-over applications from previous years.

AGENCY	Applications received	DECISIONS			
		Amended	Not Amended	Amended (not as requested)	Withdrawn
Canning, City of	1	0	0	1	0
EMHS - Armadale Kalamunda Group	2	1	1	0	0
EMHS - Royal Perth Bentley Group	10	4	2	4	0
Health, Department of	1	0	1	0	0
Justice, Department of	5	0	5	0	0
Kojonup, Shire of	54	53	0	0	0
Melville, City of	1	0	0	1	0
Murray, Shire of	0	0	1	0	0
NMHS - Mental Health	5	4	1	0	0
NMHS - Sir Charles Gardiner Hospital	1	0	1	0	0
Plantagenet, Shire of	0	0	0	0	0
Police Force, Western Australia	4	0	3	0	1
Public Advocate, Office of the	1	0	1	0	0
SMHS - Rockingham Peel Group	7	6	1	0	0
Stirling, City of	1	0	0	1	0

AGENCY	Applications received	DECISIONS			
		Amended	Not Amended	Amended (not as requested)	Withdrawn
Transport, Department of	3	0	0	0	3
WACHS - Great Southern	1	0	1	0	0
WACHS - Midwest	1	0	1	0	1
WACHS - Pilbara	1	0	0	0	1
WACHS - South West	2	2	0	0	0
Wyndham-East Kimberley, Shire of	0	1	0	0	0
TOTAL	101	71	19	7	6

SUMMARY	Applications received	OUTCOME			
		Decision Confirmed	Decision Varied	Decision Reversed	Withdrawn
Boards, Committees, Commissions, Authorities, Corporations	1	0	1	0	0
Departments (except Police and Health related agencies)	9	0	6	0	3
Health Related Agencies	30	17	8	4	2
Local Governments	57	54	1	3	0
Ministers	0	0	0	0	0
Police	4	0	3	0	1
Universities	0	0	0	0	0
TOTAL	101	71	19	7	6

Table 17: Applications for internal review of decisions regarding amendment of personal information

This table reports the number of requests for internal review of decisions made by agencies in relation to applications for amendment of personal information, and the outcomes of those internal review decisions.

Note: Agencies may carry-over applications from previous years.

AGENCY	Requests received	OUTCOME			
		Decision Confirmed	Decision Varied	Decision Reversed	Withdrawn
Justice, Department of	4	4	0	0	0
NMHS - Mental Health	1	1	0	0	0
TOTAL	7	8	0	0	0

Table 18: Fees paid and charges collected for access applications

This table reports fees paid for non-personal access applications and the charges imposed by agencies for dealing with those access applications.

No fees or charges apply for applications that are limited to personal information about the applicant only.

However, if the applicant is seeking more than their own personal information (a non-personal application), an application fee of \$30 is required to make a valid access application under the FOI Act. An agency may choose to impose charges – in accordance with the FOI Act and FOI Regulations – for dealing with a non-personal access application. The decision to impose charges for dealing with a non-personal access application is at the discretion of the agency.

AGENCY	Application fees collected (\$)	Charges collected (\$)
Boards, Committees, Commissions, Authorities, Corporations		
Aqwest	30	30
Chemistry Centre Western Australia	30	0
DevelopmentWA	210	0
Electoral Commission, Western Australian	30	0
Forest Products Commission	120	0
Gold Corporation	30	0
Horizon Power	30	30
Insurance Commission of Western Australia	4,400	0
Landgate	420	0
Legal Practice Board	90	0
Lotteries Commission	30	0
Mental Health Commission	30	0
Metropolitan Cemeteries Board	300	300

AGENCY	Application fees collected (\$)	Charges collected (\$)
Public Advocate, Office of the	82	82
Public Sector Commission	150	0
Public Transport Authority	780	0
Public Trust Office	30	30
Racing and Wagering Western Australia	240	0
Salaries and Allowances Tribunal	30	0
School Curriculum and Standards Authority	120	0
Small Business Development Corporation	150	0
Southern Ports Authority	30	0
Sports Centre Trust (VenuesWest)	90	0
Water Corporation	780	0
Western Power	810	720
WorkCover Western Australia	3,600	0
<i>Sub-total: Boards, Committees, Commissions, Authorities, Corporations</i>	<i>12,642</i>	<i>1,192</i>
Departments (except Police and Health related agencies)		
Biodiversity, Conservation and Attractions, Department of	1,200	0
Communities, Department of	3,270	2,115
Education, Department of	1,200	0
Energy, Mines, Industry Regulation and Safety, Department of	21,150	0
Finance, Department of	510	0
Fire and Emergency Services, Department of	6,720	0
Health, Department of	900	0

AGENCY	Application fees collected (\$)	Charges collected (\$)
Jobs, Tourism, Science and Innovation, Department of	480	0
Justice, Department of	1,230	0
Local Government, Sport and Cultural Industries, Department of	660	0
Main Roads Western Australia	1,110	0
North Metropolitan TAFE	120	0
North Regional TAFE	30	0
Planning, Lands and Heritage, Department of	2,580	0
Premier and Cabinet, Department of the	1,380	0
Primary Industries and Regional Development, Department of	870	0
Training and Workforce Development, Department of	660	0
Transport, Department of	5,220	1,497
Treasury, Department of	210	0
Water and Environmental Regulation, Department of	6,990	0
<i>Sub-total: Departments</i>	<i>56,490</i>	<i>3,612</i>
Health Related Agencies		
C&AHS - Perth Children's Hospital	330	0
Chief Psychiatrist, Office of the	30	0
EMHS - Armadale Kalamunda Group	720	720
EMHS - Corporate Office	240	0
Royal Perth Bentley Group	14,700	14,700
<i>Sub-total: Health Related Agencies</i>	<i>16,020</i>	<i>15,420</i>
North Metropolitan Health Services (NMHS)		

AGENCY	Application fees collected (\$)	Charges collected (\$)
NMHS - Corporate Office	120	120
NMHS - King Edward Memorial Hospital	120	0
NMHS - Mental Health	210	0
NMHS - Sir Charles Gairdner Hospital	6,960	0
<i>Sub-total: NMHS</i>	<i>7,410</i>	<i>120</i>
South Metropolitan Health Services (SMHS)		
SMHS - Fiona Stanley Fremantle Hospital Group	13,710	0
SMHS - Rockingham Peel Group	13,710	1,125
<i>Sub-total: SMHS</i>	<i>16,290</i>	<i>1,125</i>
Western Australia Country Health Services (WACHS)		
WACHS - Central Office	300	0
WACHS - Goldfields	1,080	0
WACHS - Great Southern	1,080	0
WACHS - Kimberley	2,130	0
WACHS - Midwest	280	280
WACHS - Pilbara	1,830	0
WACHS - South West	3,210	0
WACHS - Wheatbelt	600	600
<i>Sub-total: WACHS</i>	<i>10,510</i>	<i>880</i>
<i>Sub-Total: Health Related Agencies</i>	<i>50,230</i>	<i>17,545</i>
Local Governments		
Albany, City of	300	0

AGENCY	Application fees collected (\$)	Charges collected (\$)
Armadale, City of	630	0
Ashburton, Shire of	150	2,617
Augusta-Margaret River, Shire of	450	600
Bassendean, Town of	330	803
Bayswater, City of	510	510
Belmont, City of	390	1,525
Bridgetown-Greenbushes, Shire of	30	0
Broome, Shire of	120	292
Bunbury, City of	270	270
Busselton, City of	690	150
Cambridge, Town of	660	0
Canning, City of	630	570
Capel, Shire of	60	276
Carnamah, Shire of	30	30
Carnarvon, Shire of	30	30
Claremont, Town of	360	1,500
Cockburn, City of	990	1,020
Cottesloe, Town of	180	1,590
Cranbrook, Shire of	60	60
Cunderdin, Shire of	60	0
Dandaragan, Shire of	60	60
Dardanup, Shire of	30	145

AGENCY	Application fees collected (\$)	Charges collected (\$)
Denmark, Shire of	120	510
Derby-West Kimberley, Shire of	90	564
Donnybrook-Balingup, Shire of	30	0
East Pilbara, Shire of	150	0
Esperance, Shire of	240	0
Exmouth, Shire of	60	120
Fremantle, City of	510	0
Gingin, Shire of	180	0
Gosnells, City of	570	570
Greater Geraldton, City of	120	0
Harvey, Shire of	60	0
Joondalup, City of	2,190	0
Kalamunda, City of	720	0
Kalgoorlie-Boulder, City of	450	0
Karratha, City of	330	1,196
Katanning, Shire of	597	0
Kellerberrin, Shire of	30	80
Kojonup, Shire of	30	60
Kwinana, City of	270	60
Leonora, Shire of	30	0
Mandurah, City of	390	0
Manjimup, Shire of	150	0

AGENCY	Application fees collected (\$)	Charges collected (\$)
Melville, City of	1,320	0
Merredin, Shire of	30	150
Mosman Park, Town of	300	0
Mundaring, Shire of	360	0
Murray, Shire of	30	0
Nannup, Shire of	30	0
Narrogin, Shire of	60	0
Nedlands, City of	210	0
Northam, Shire of	210	625
Northampton, Shire of	30	30
Peppermint Grove, Shire of	60	60
Perth, City of	930	2,127
Port Hedland, Town of	150	0
Ravensthorpe, Shire of	60	0
Rockingham, City of	600	0
Serpentine-Jarrahdale, Shire of	330	90
South Perth, City of	330	1,470
Stirling, City of	2,460	0
Subiaco, City of	360	0
Swan, City of	1,590	787
Victoria Park, Town of	300	0
Vincent, City of	180	0

AGENCY	Application fees collected (\$)	Charges collected (\$)
Wanneroo, City of	1,440	0
Waroonna, Shire of	240	0
West Arthur, Shire of	30	0
Yilgarn, Shire of	30	30
York, Shire of	60	0
<i>Sub-Total: Local Governments</i>	<i>26,067</i>	<i>20,577</i>
Ministers		
Buti MLA, Hon Dr T A	150	0
Carey MLA, Hon J N	150	0
Ellery MLC, Hon S M	60	0
Jarvis MLC, Hon J	60	0
McGurk MLA, Hon S F	30	0
Michael MLA, Hon D R	180	0
Papalia MLA, Hon P	210	0
Punch MLA, Hon D T	30	0
Quigley MLA, Hon J R	30	0
Saffioti MLA, Hon R	210	0
Sanderson MLA, Hon A	90	0
Templeman MLA, Hon D A	60	0
Whitby MLA, Hon R R	210	0
<i>Sub-Total: Ministers</i>	<i>1,470</i>	<i>0</i>

AGENCY	Application fees collected (\$)	Charges collected (\$)
Police Force, Western Australia	53,310	0
<i>Sub-Total: Police</i>	<i>53,310</i>	<i>0</i>
Universities		
Curtin University of Technology	180	0
Edith Cowan University	60	0
Murdoch University	60	0
University of Western Australia, The	120	0
<i>Sub-Total: Universities</i>	<i>420</i>	<i>0</i>
TOTAL	200,629	42,926

SUMMARY	Application fees collected (\$)	Charges collected (\$)
Boards, Committees, Commissions, Authorities, Corporations	12,642	1,192
Departments (except Police and Health related agencies)	56,490	3,612
Health Related Agencies	50,230	17,545
Local Governments	26,067	20,577
Ministers	1,470	0
Police	53,310	0
Universities	420	0
TOTAL	200,269	42,926

Table 19: Charges reduced by agencies

Agencies are not required to impose charges. However, if the agency decides to impose a charge, under regulation 3 of the FOI Regulations, agencies are required to reduce the charges imposed by 25% if the applicant is impecunious or the holder of certain types of concession cards. The agency may decide to reduce the charges by more than 25% or to waive the charges.

AGENCY	\$ charges reduced	Reason for reduction in charges		
		Impecunious	Pensioner	Other
Gold Corporation	60	0	0	2
Greyhound Racing Association, Western Australian	250	0	0	2
Legal Practice Board	30	0	0	1
Pilbara Ports Authority	1	0	0	1
Public Advocate, Office of the	1	0	1	0
School Curriculum and Standards Authority	30	0	0	1
Synergy	9	0	0	0
<i>Sub-Total: Boards, Committees, Commissions, Authorities, Corporations</i>	381	0	1	7
Fire and Emergency Services, Department of	25,755	0	0	220
South Metropolitan TAFE	30	1	0	0
<i>Sub-Total: Departments</i>	25,785	1	0	220
EMHS - Armadale Kalamunda Group	30	0	1	0
<i>Sub-total: EMHS</i>	30	0	1	0
Health Support Services	30	0	0	0
NMHS - PathWest Laboratory Medicine WA	1,110	0	0	37
<i>Sub-total: NMHS</i>	1,140	0	0	37
<i>Sub-Total: Health Related Agencies</i>	1,170	0	1	41

AGENCY	\$ charges reduced	Reason for reduction in charges		
		Impecunious	Pensioner	Other
Bassendean, Town of	128	0	1	2
Broome, Shire of	60	0	0	2
Bunbury, City of	60	0	0	0
Carnamah, Shire of	60	0	0	0
Carnarvon, Shire of	30	0	0	0
Cottesloe, Town of	1,140	1	0	0
Fremantle, City of	550	0	0	0
Karratha, City of	2,442	0	0	7
Nedlands, City of	5	0	0	5
South Perth, City of	30	0	1	0
Swan, City of	202	0	0	1
<i>Sub-Total: Local Governments</i>	4,707	1	3	52
TOTAL	32,043	2	5	320

AGENCY	\$ charges reduced	Reason for reduction in charges		
		Impecunious	Pensioner	Other
Boards, Committees, Commissions, Authorities, Corporations	381	44	1	7
Departments (except Police and Health related agencies)	25,785	1	0	220
Health Related Agencies	1,170	0	1	41
Local Governments	59,237	1	3	52
Ministers	0	0	0	0
Police	0	0	0	0
Universities	0	0	0	0
TOTAL	86,573	46	5	320